

## Lesson 3: Implementing Group Policy

You can use group policy to establish configuration settings for your organization. This lesson guides you through the steps of implementing a group policy using the Group Policy tab and the Group Policy snap-in. You also learn how to modify a group policy.

---

### After this lesson, you will be able to

- Implement a group policy
- Modify a group policy

**Estimated lesson time: 60 minutes**

---

## Implementing Group Policy

The tasks for implementing group policy are

1. Creating a GPO
2. Creating a console for the GPO
3. Delegating administrative control of the GPO
4. Specifying group policy settings for the GPO
5. Disabling unused group policy settings
6. Indicating any GPO processing exceptions
7. Filtering the scope of the GPO
8. Linking the GPO to a site, domain, or OU

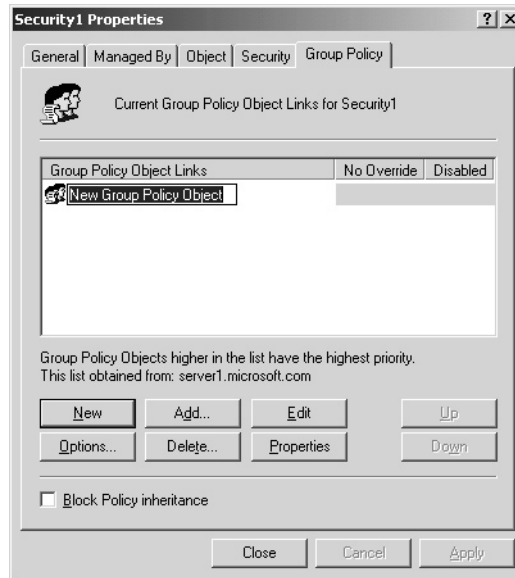
## Creating a GPO

The first step in implementing a group policy is to create a GPO. Recall that a GPO is a collection of group policy settings.

► **To create a GPO**

1. Determine the type of GPO you want to create.
  - To create a GPO linked to a domain or an OU, open Active Directory Users and Computers.
  - To create a GPO linked to a site, open Active Directory Sites and Services.
2. Right-click the site, domain, or OU for which you want to create a GPO, click Properties, and select the Group Policy tab (see Figure 12.10).
3. Click New, then type the name you would like to use for this GPO.

By default, the new GPO is linked to the site, domain, or OU that was selected in the MMC when it was created and its settings apply to that site, domain, or OU.
4. Click Close.



**Figure 12.10** Group Policy tab

## Creating a GPO Console

After you create a GPO, you should add the Group Policy snap-in to an MMC and create a stand-alone GPO console. After saving the console, you can open it whenever necessary from the Administrative Tools menu.

### ► To create a GPO console

1. Click Start, then point to Run.
2. In the Run dialog box, type **mmc** in the Open box and click OK.
3. In the new MMC console, from the Console menu, click Add/Remove Snap-In.
4. In the Add/Remove Snap-In dialog box, click Add.
5. In the Add Standalone Snap-In dialog box, select Group Policy, then click Add.
6. In the Select Group Policy Object page, click Browse to find the GPO for which you want to create a snap-in.
7. In the Browse For A Group Policy Object dialog box, click the All tab, click the GPO name, then click OK.
8. In the Select Group Policy Object page, click Finish, then click Close in the Add Standalone Snap-In dialog box.
9. Click OK in the Add/Remove Snap-In dialog box.
10. On the Console menu, click Save As.

11. In the Save As dialog box, type the GPO name in the File Name box and click Save. The GPO is now available on the Administrative Tools menu.

## Delegating Administrative Control of a GPO

After you create a GPO, it is important to determine which groups of administrators have access permissions to the GPO. The default permissions on GPOs are shown in Table 12.2.

**Table 12.2 Default GPO Permissions**

Security Group	Default Settings
Authenticated Users	Read, Apply Group Policy, Special Permissions
CREATOR OWNER	Special Permissions
Domain Administrators	Read, Write, Create All Child Objects, Delete All Child Objects, Special Permissions
Enterprise Administrators	Read, Write, Create All Child Objects, Delete All Child Objects, Special Permissions
SYSTEM	Read, Write, Create All Child Objects, Delete All Child Objects, Special Permissions

By default, the Default Domain Policy GPO cannot be deleted by any administrator. This prevents the accidental deletion of this GPO, which contains important required settings for the domain.

If you are working with a GPO from a pre-built console, such as the Active Directory Users and Computers, the Delegation Of Control Wizard is not available for use in delegating administrative control of a GPO; it only controls security of an object.

### ► To delegate administrative control of a GPO

1. Access the Group Policy snap-in for the GPO.
2. Right-click the root node of the console and click Properties
3. Click the Security tab (see Figure 12.11), then click the security group for which you want to allow or deny administrative access to the GPO.

If you need to change the list of security groups for which you want to allow or deny administrative access to the GPO, you can add or remove security groups using Add and Remove.

4. To provide administrative control of all aspects of the GPO, set the Read permission to Allow and set the Write permission to Allow.

A user or administrator who has Read access but does not have Write access to a GPO cannot use the Group Policy snap-in to see the settings that it contains. All extensions to the Group Policy snap-in require Write access to open a GPO.

5. Click OK.

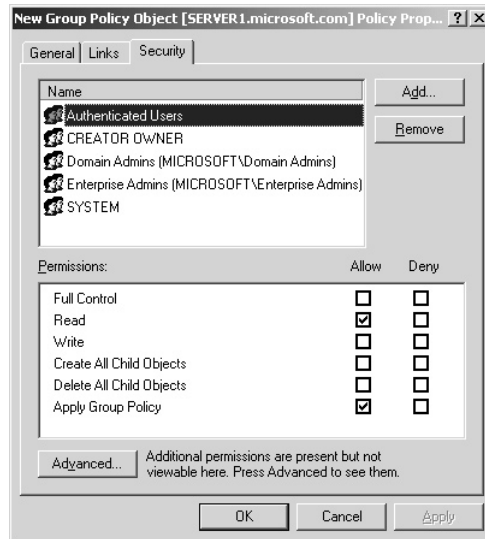


Figure 12.11 GPO Properties Security tab

## Specifying Group Policy Settings

After you create a GPO and determine the administrators who have access permissions to the GPO, you can specify the group policy settings.

### ► To specify group policy settings for a GPO

1. Access the Group Policy snap-in for the GPO (see Figure 12.12).

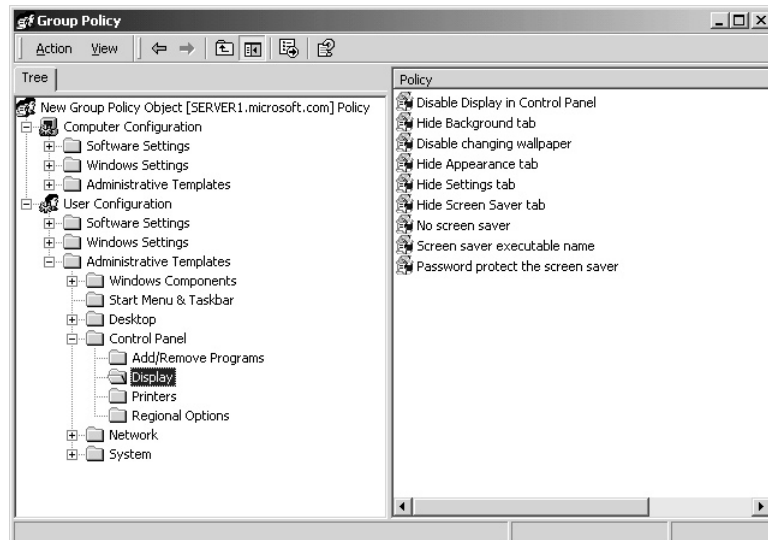


Figure 12.12 Group Policy snap-in